



HELPING YOU NAVIGATE YOUR JOURNEY TO COMPLIANCE



HAVE YOU NOTICED HOW MUCH SMOOTHER A JOURNEY GOES WITH SOMEONE HELPING YOU NAVIGATE?

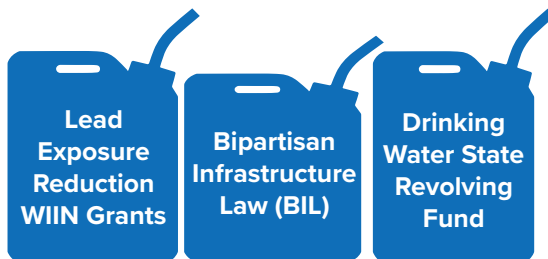
AE2S can help you successfully navigate the road to Revised Lead and Copper Rule compliance from start to finish. Whether it is helping you tackle unknowns, avoid roadblocks, or find the best route for your individual needs –

we're here to help you every step of the way!



SECURE FUNDING & START BUDGETING ASAP!

The most important part of your journey is starting the budgeting process. Our team can help you determine what your need is and the best way to secure the investments required through a variety of funding and financing options. We are tracking the various local and federal funding opportunities and can help you navigate which are best fit for your community.



NEED HELP?

Nate Weisenburger, PE
Nate.Weisenburger@ae2s.com
(406) 268-0626



REVISED LEAD & COPPER RULE

ROADMAP



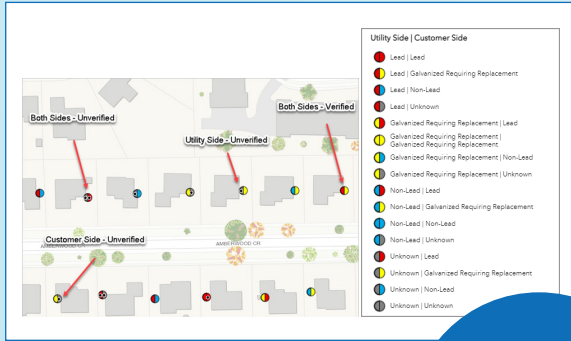
Let us be your guide!



DESTINATION: COMPLIANCE 2024

What's your strategy?

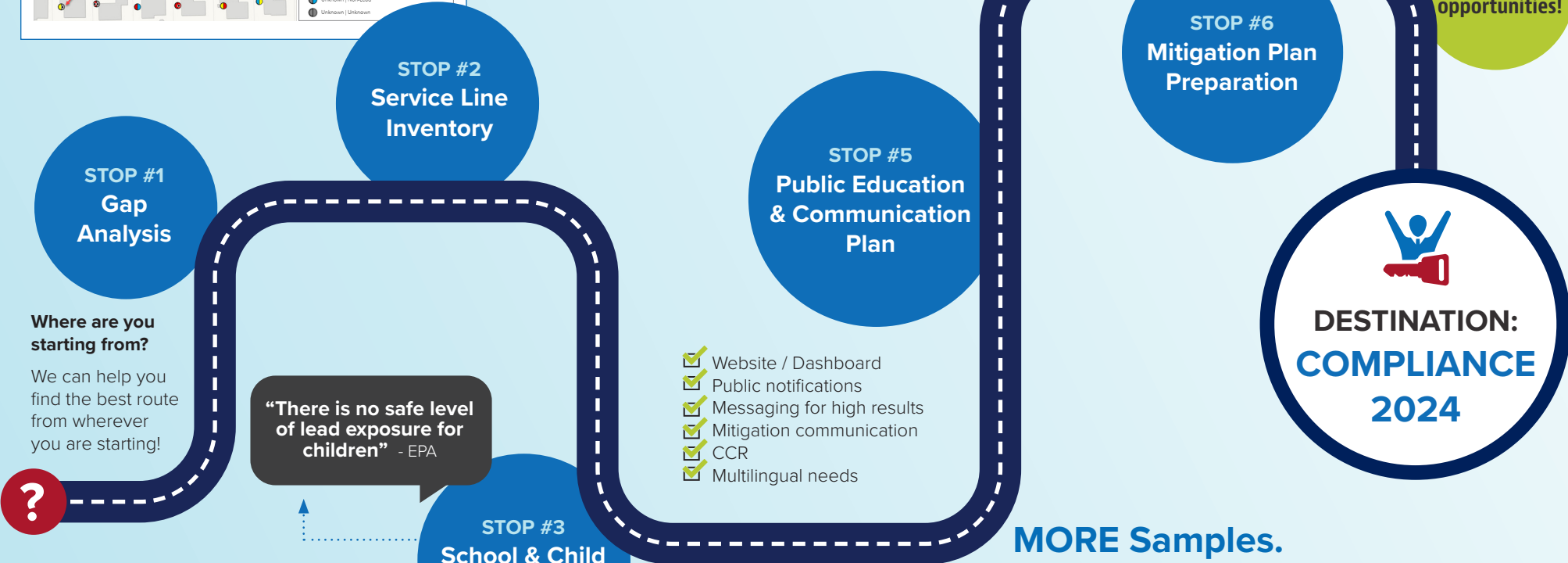
to figure out your unknowns



What are you going to do?
What's your plan?

- » Prioritization
- » Asset Management Integration
- » Funding Assistance

See back for funding opportunities!

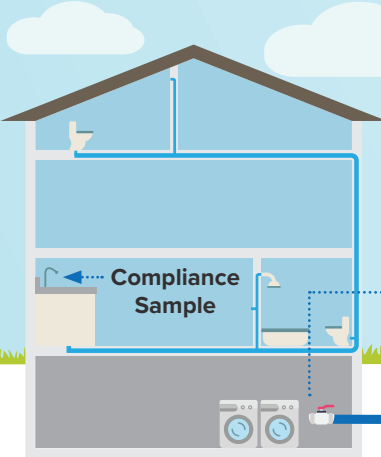


Where are you starting from?
We can help you find the best route from wherever you are starting!

“There is no safe level of lead exposure for children” - EPA

- ✓ Website / Dashboard
- ✓ Public notifications
- ✓ Messaging for high results
- ✓ Mitigation communication
- ✓ CCR
- ✓ Multilingual needs

MORE Samples.
MORE Frequently.



Water system's new responsibility to identify and inventory

STOP #4 Sampling Plan Preparation
Every system will have to sample every 6 months!

- NEW TIER SYSTEM**
- Tier 1: LSL homes with single families
 - Tier 2: LSL homes/buildings with multiple families
 - Tier 3: Galvanized lines
 - Tier 4: Single family homes with copper pipes with lead solder
 - Tier 5: Sites representative of the system including non-residential buildings

NEED HELP NAVIGATING?